



22055 CR 250

Rolling Hills Addition, Morrison

One Year Old Home, Loaded With Extras

Beautiful custom cabinets paired with granite countertops accent the kitchen with its wood floor. Just off of the kitchen is an open dining area with the same wood flooring as the kitchen. From the kitchen, move into the living room with its remote-controlled



gas log fireplace and flat screen TV inset handcrafted from wood which serves as a wonderful centerpiece for the main living area. From the living room enjoy the country view

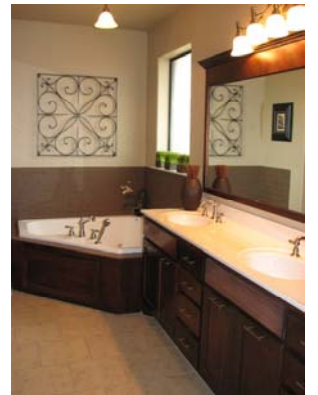


through the large picture window or access the back patio. The patio also offers access to the master bedroom and bathroom with its garden spa tub, his and hers vanities, separate shower and large walk-in closet.

The home features two additional bedrooms with ample closet space, a home office, formal dining area, ceramic tile on bathroom floors, laundry/utility room plumbed for either gas or electric

More photos at www.choosewisely.info

appliances, and an attached oversized two-car garage with plenty of room to hold a work bench or that extra refrigerator while still parking two vehicles. The home is only minutes from Stillwater, is on city water, has an aerobic septic system with sprinklers, and receives electrical service from OG&E. Call to schedule your showing of this 1,852 sq. ft., 3 bed, 2 bath home on 3 rural acres today. An additional 3 acres next to the property is available, ask for pricing.



Priced at

\$212,000

Directions

From Highway 177 & 64 intersection (Bill's Corner) go 2 miles east, turn south on CR 250. Home is on west (right) side of CR 250, just off of Highway 64.

MLS # 100563



"When buying or selling, choose Wisely"

Tony Wisely, GRI — Broker / Auctioneer

311 N 7th - PO BOX 30
PERRY OK 73077-0030
<http://www.choosewisely.info/>
tony@choosewisely.info
580-370-0711 (cell)
580-336-9090 (office)
580-336-9091 (fax)

